



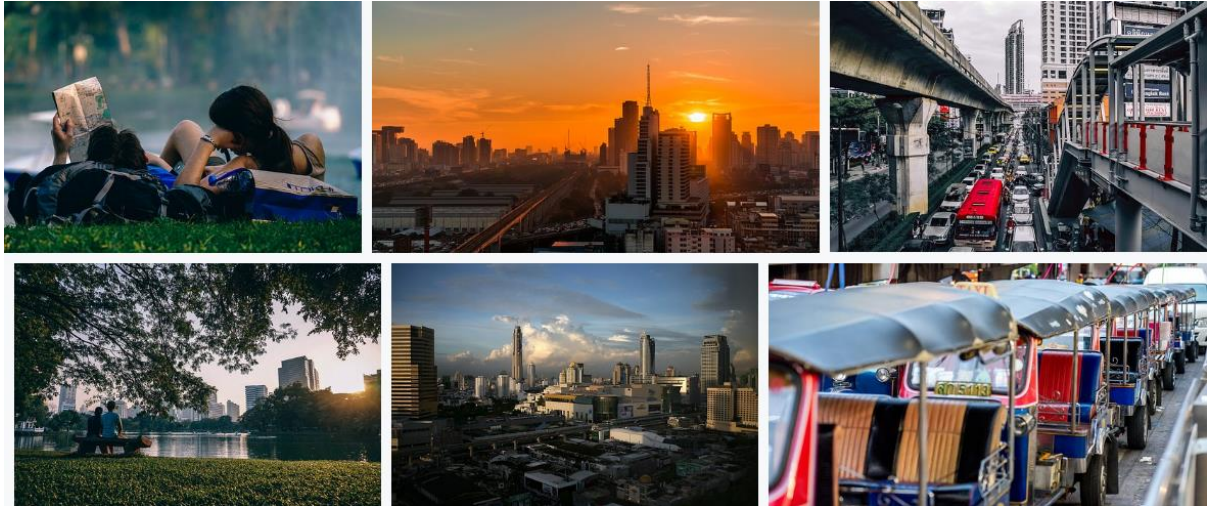
Asia Touch
Express Co.,Ltd.

TAT License 14/02566

279/74 The Color Premium Soi Sulao Klong Nung 15, Bangchan,
Klongsamwa, Bangkok 10510 Thailand

Asia Touch The Essence of Travel

BANGKOK'S FANTASTIC



Highlight:

- An Inside glimpse to Bangkokian morning life.
- Go through the spectacle of the monk's morning chants at Wat Pho.
- Navigate the urban center as a local on public transport.

Get advantage of Bangkok's fantastic local transportation as you journey through the capital in an eco-friendly way. Join your guide for a ride on the Sky train offering great vistas of the city and on to public boat along Chao Phraya River. After visiting Wat Pho and Grand Palace, travel by local Tuk Tuk and canal boat to Jim Thompson's house in the center in the metropolis.

Time: 08.00-17.00

Note: All services by public conveyance.

Child Policy: Child height under 100 cm will get a discount.

Office: +66 (0) 6 5702 8866
M: +66 (0) 8 5822 7676, +66 (0) 9 2502 8181
E: rsvn.asiatouch@gmail.com